

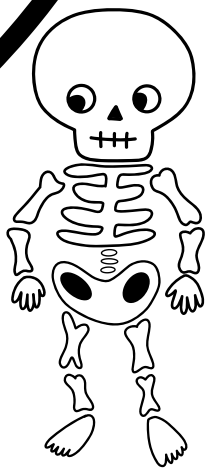
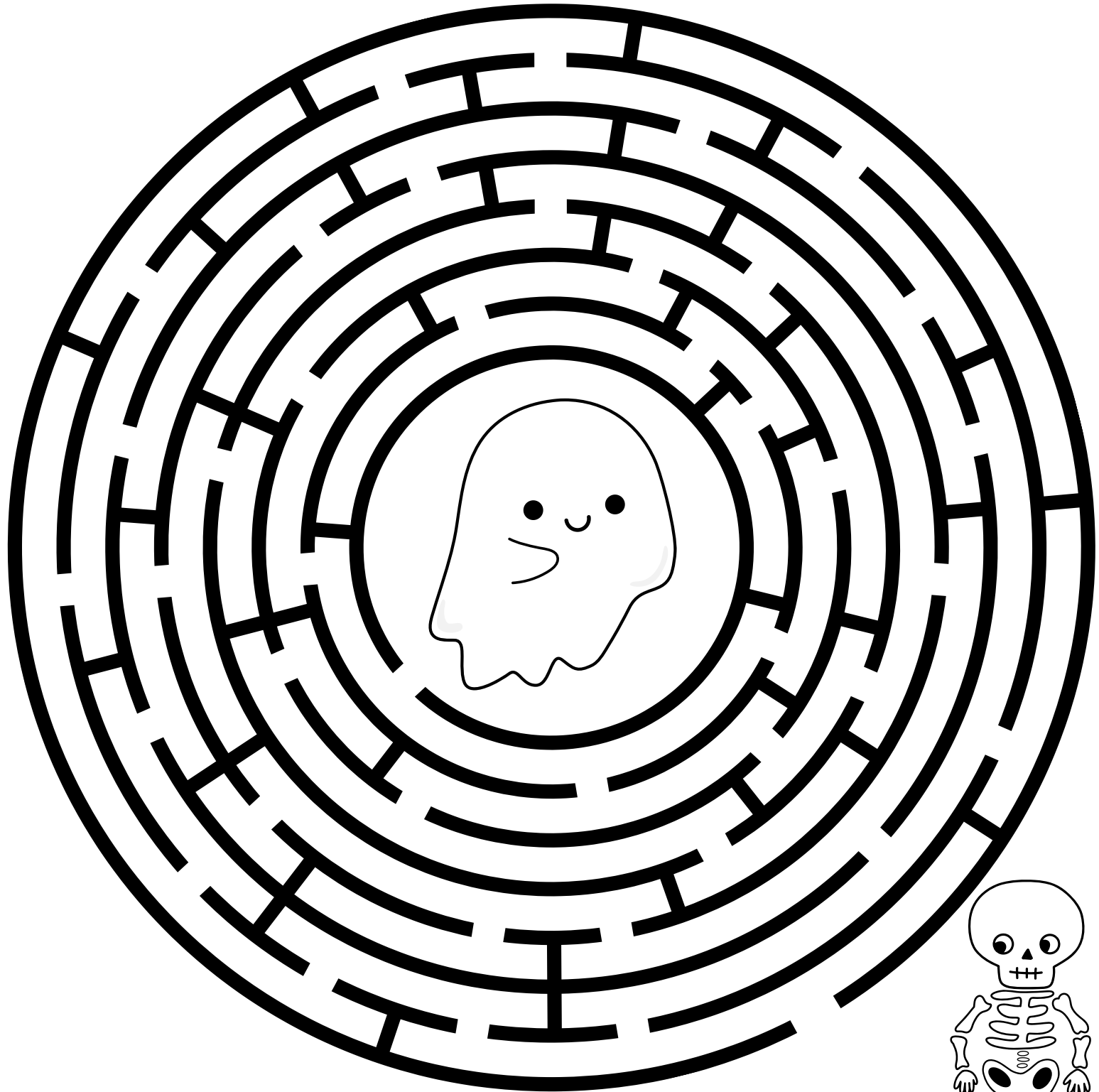
# HREKKJAVAKA

verkefnahefti



# HREKKJAVAKA

Aðstoðaðu beinagrindina að komast í heimsókn  
til Draugsa vinar síns

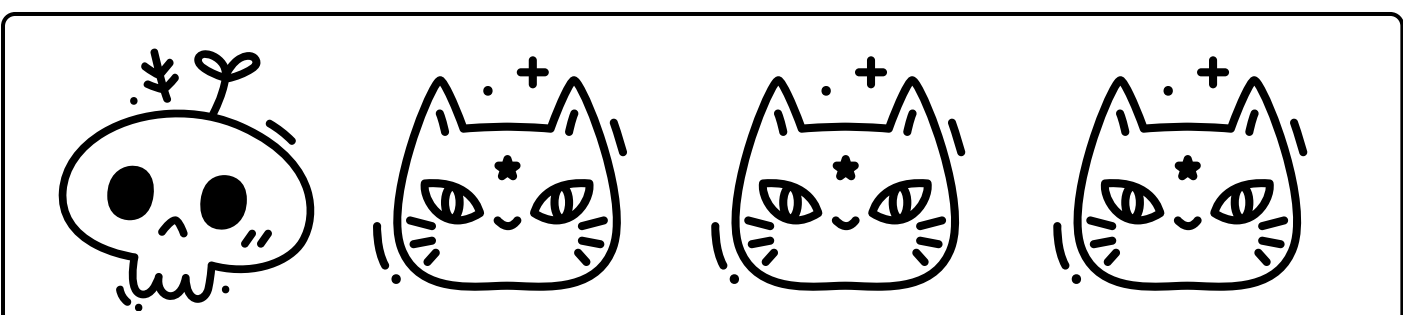
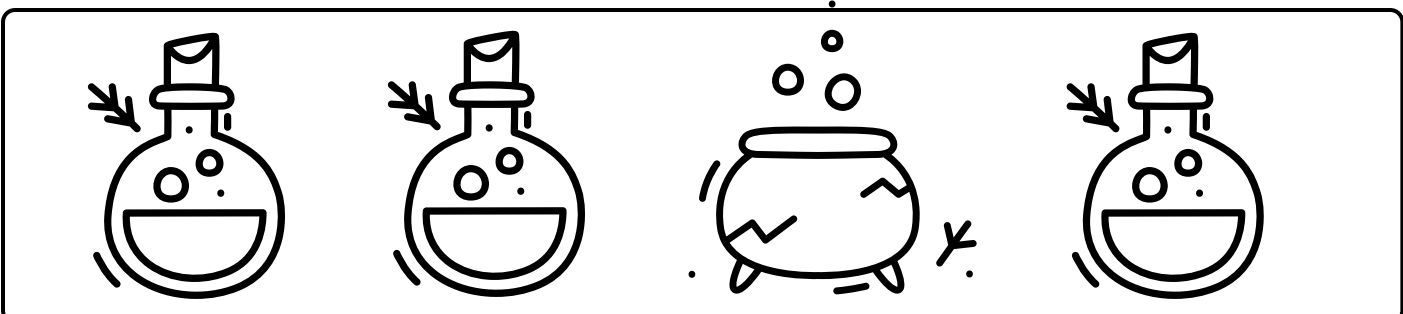
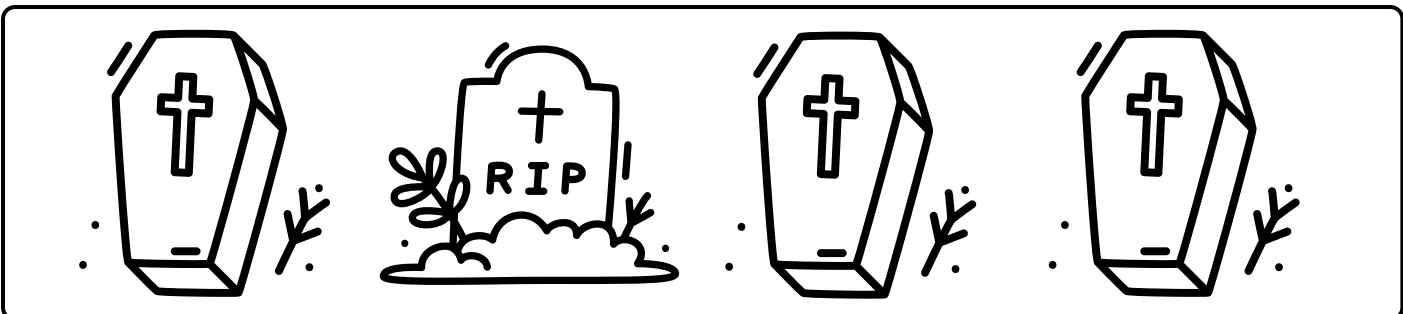
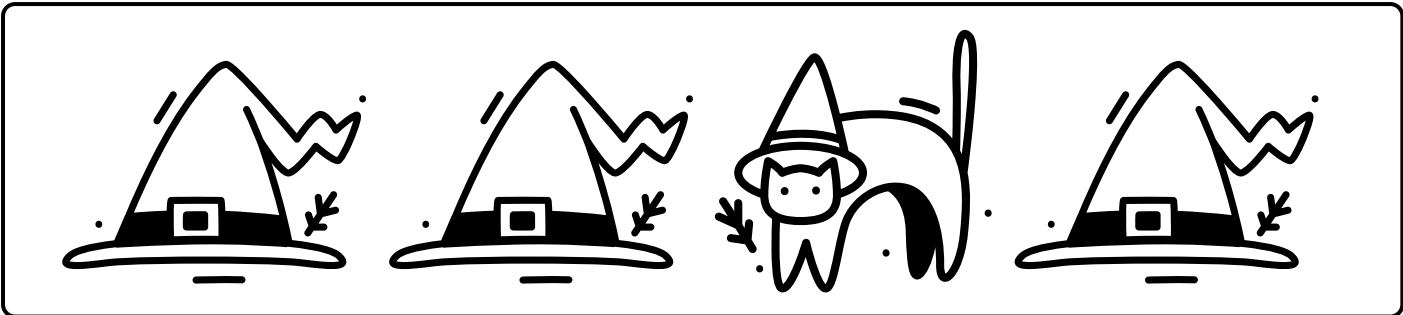
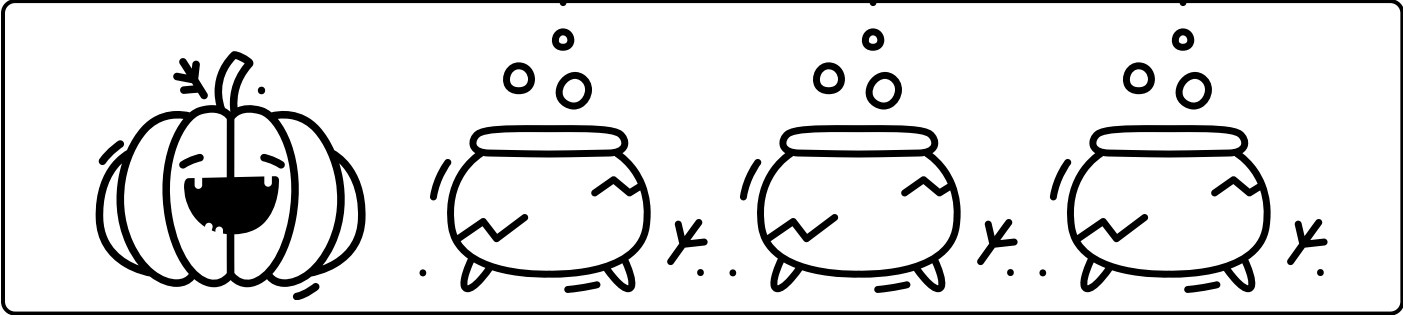




# HREKKJAVAKA

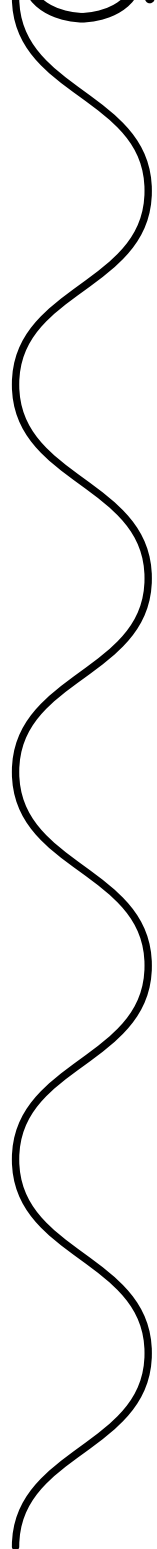
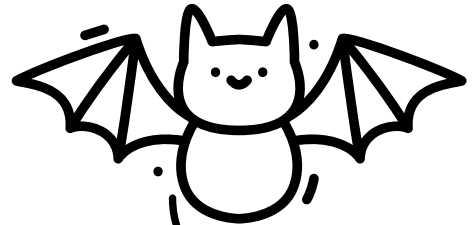


Litaðu Hrekkjavökuhlutinn sem er ólíkur hinum.



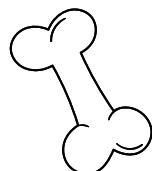
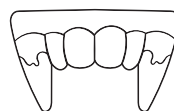
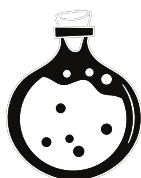
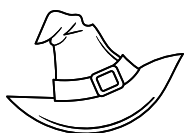
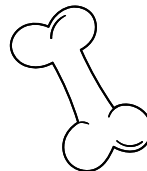
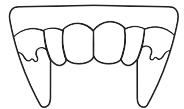
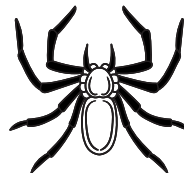
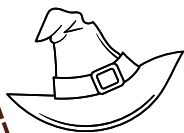
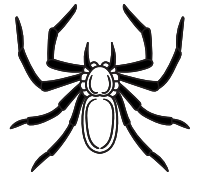
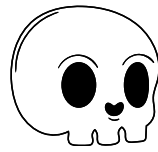
# HREKKJAVAKA

Vandaðu þig að klippa eftir línunum.



# HREKKJAVAKA

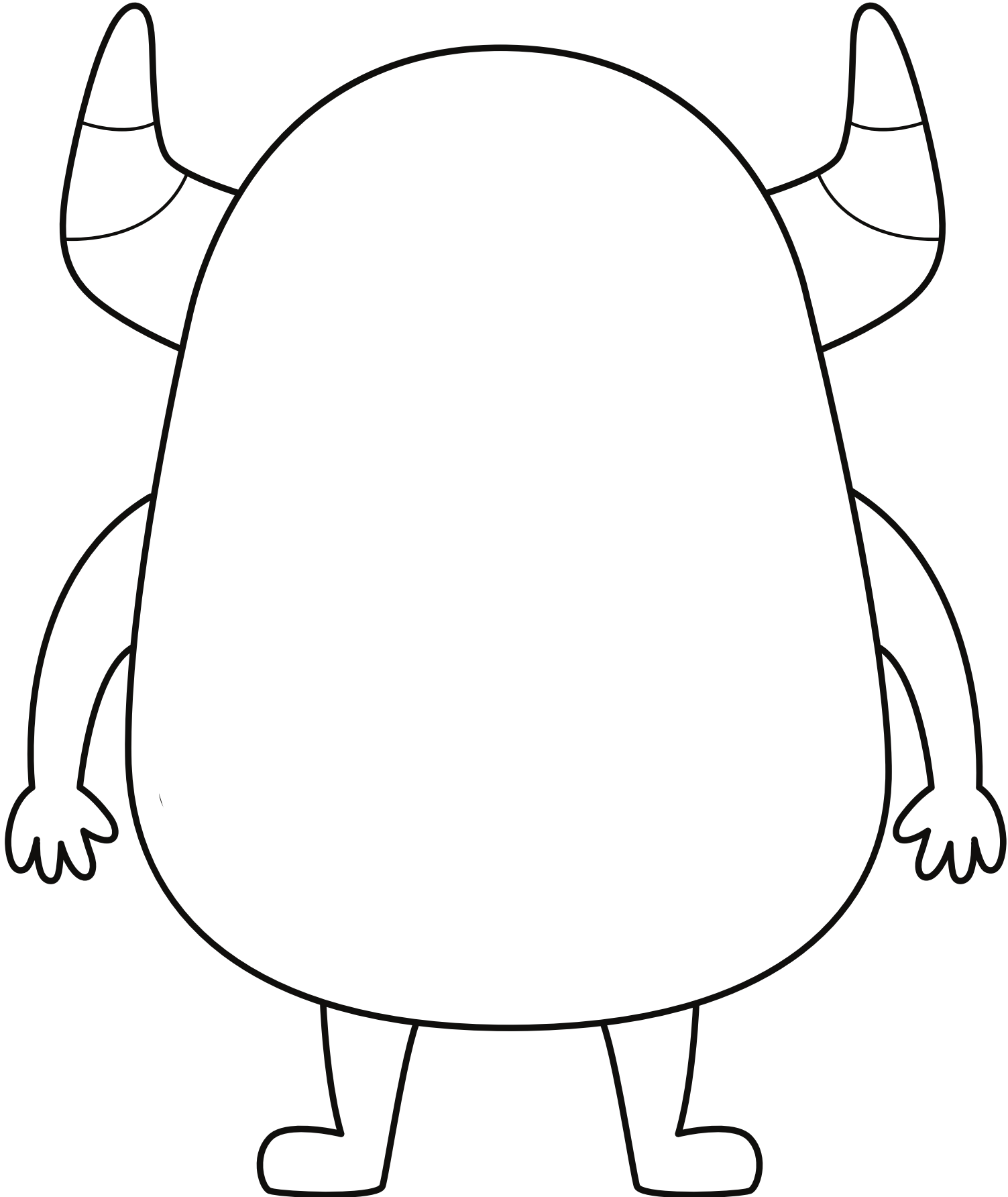
PARAÐU SAMAN MEÐ DVÍ AÐ DRAGA LÍNU Á  
MILLI ÞESS SEM ER EINS.





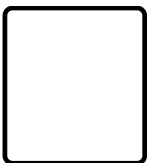
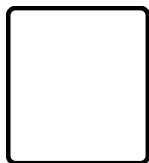
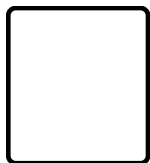
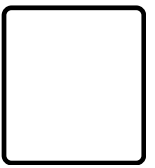
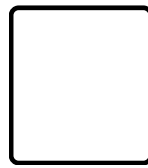
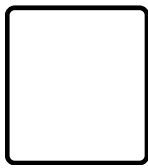
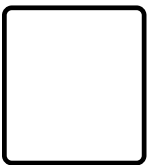
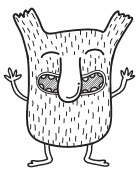
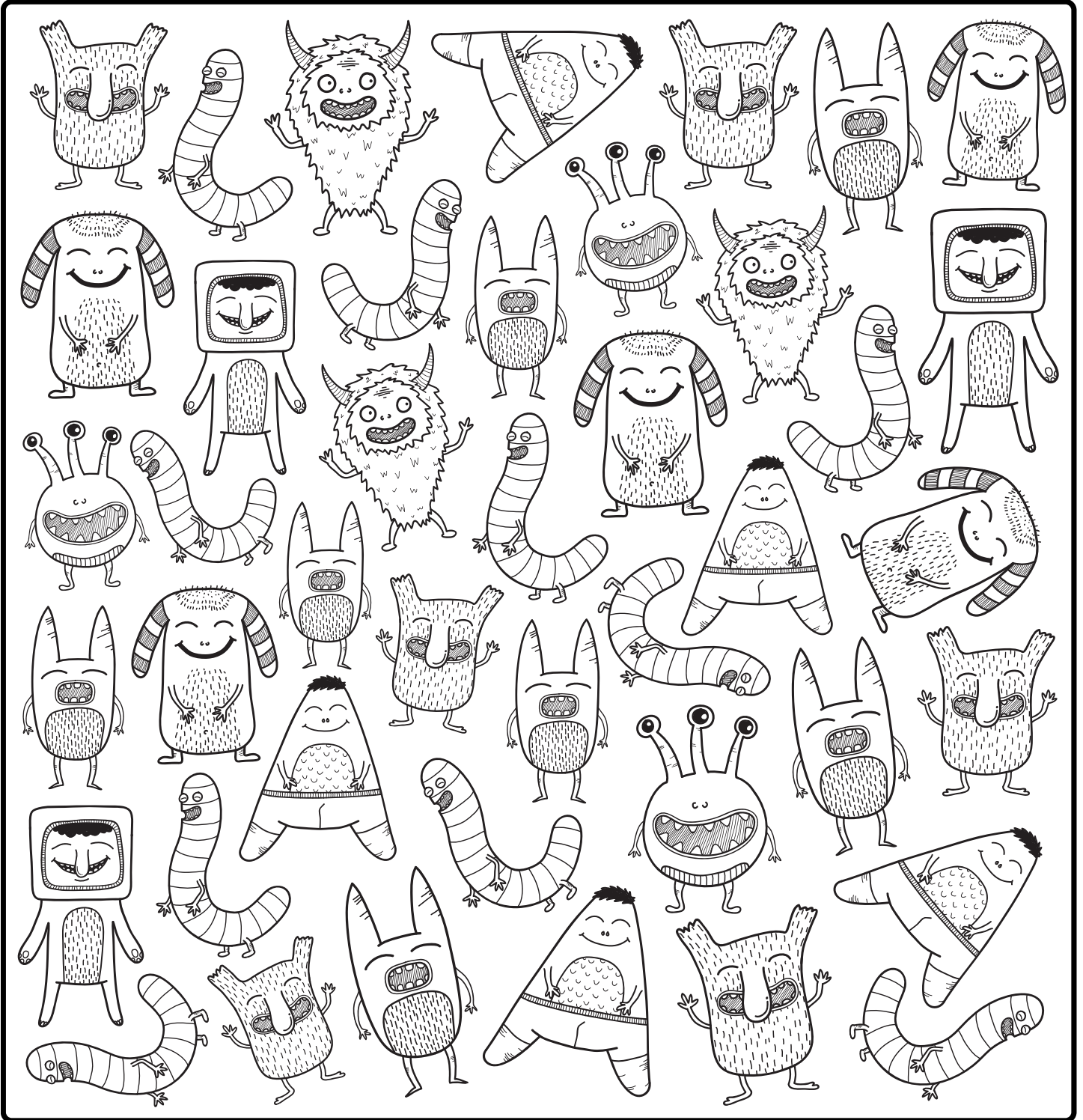
# HREKKJAVAKA

TEIKNADU ANDLIT OG LITADU DITT EIGIÐ SKRÍMSLI



# HREKKJAVAKA

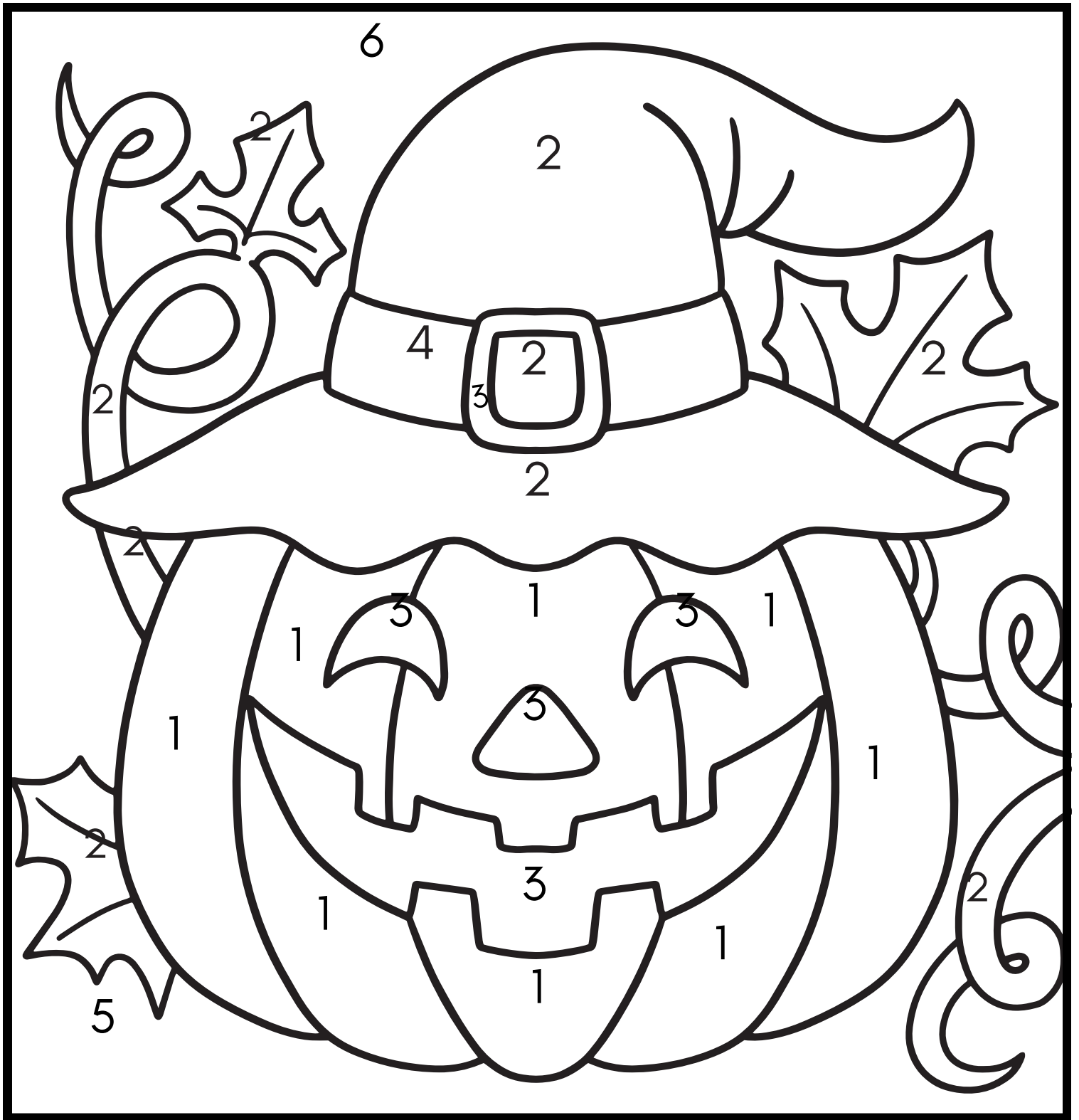
TELDU, SKRIFADU TÖLUNA Í KASSANN OG LITADU SVO KALLANA





# HREKKJAVAKA

LITADU EFTIR TÖLUNUM



1 APPELSÍNU-  
GULUR



2 BRÚNN



3 GULUR



4 FJÓLUBLÁR



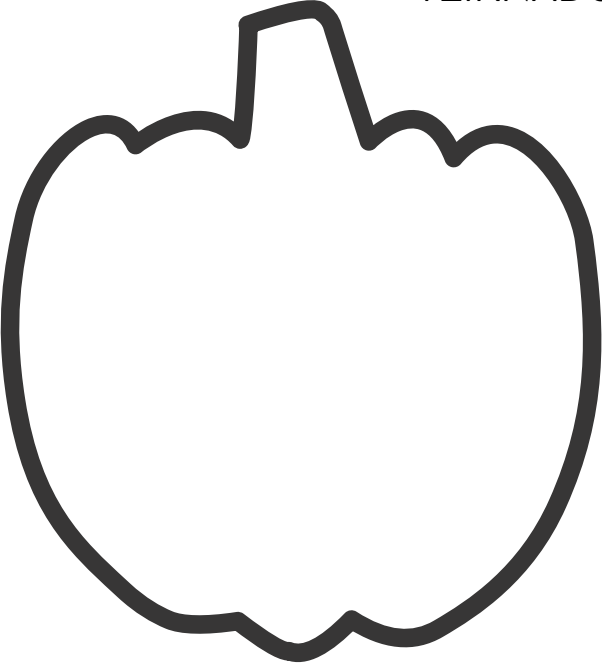
5 GRÆNN



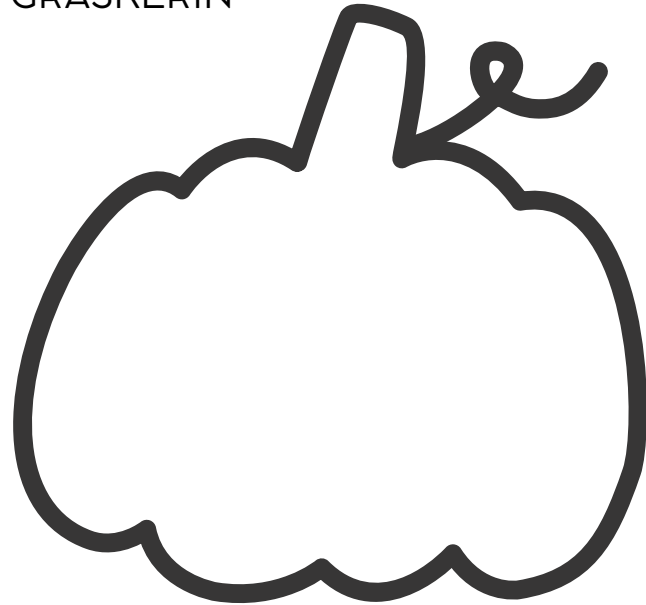
6 BLÁR

# HREKKJAVAKA

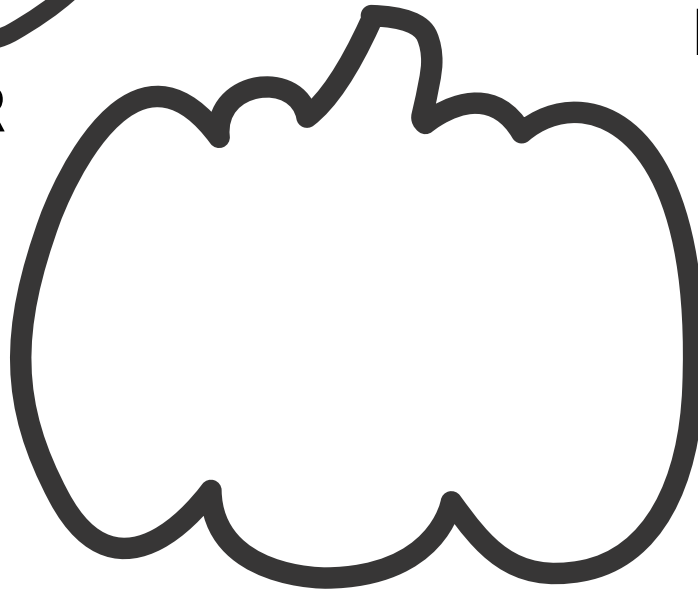
TEIKNADU SVIPBRIGÐIN Á GRASKERIN



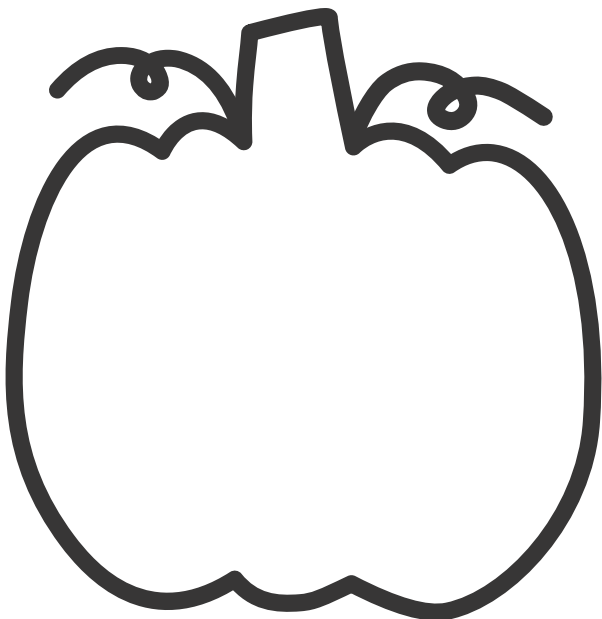
**GLAÐUR**



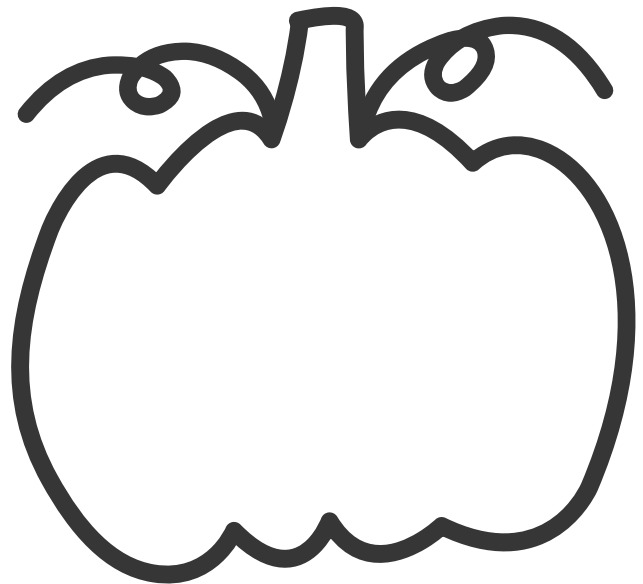
**LEIÐUR**



**REIÐUR**



**HRÆDDUR**



**ÞREYTTUR**